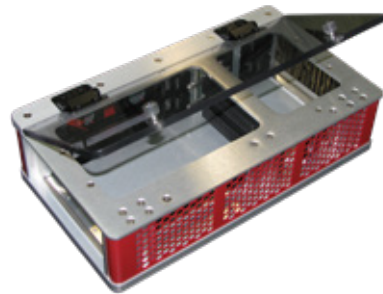


## FEATURES

- VITA 65 3U OpenVPX compliant
- Small chassis footprint for easy portability
- Light weight: 9 lbs total
- Hinged transparent cover allows visibility to operating modules as well as debug access to modules
- Quiet fans for office demo use
- Size: 6.60" wide x 3.26" high x 11.80" deep
- Slot count: 2-slot  
OpenVPX 1" pitch
- Power supply: separate 1U  
ATX style power supply for  
easy portability
- Cooling: air-cooled
- OpenVPX backplane profile:  
BKP3-DIS02-15.2.8-2

# CHASSIS SOLUTION 849-S145

3U 2-SLOT OPENVPX  
CUSTOM ENCLOSURE



## MARKET

Embedded computing

## APPLICATION

Demonstration chassis

## CHALLENGE

Provide a small, portable, lightweight 2-slot OpenVPX chassis for module demonstration and office/development use.

## OVERVIEW

This custom desktop solution is a convection-cooled desktop chassis for demonstration and development purposes. It includes a front load 3U 2-slot 1" pitch air-cooled card cage, a rear 3U 2-slot 1" pitch rear transition module card cage, and a 2-slot custom 3U OpenVPX backplane, compliant to OpenVPX Backplane Profile BKP3-DIS02-15.2.8-2. The chassis can be powered by an external ATX type power supply using a standard ATX type power connector. The chassis is cooled by two low noise 40 mm fans for office use. A hinged transparent cover allows visibility to operating modules as well as debug access to modules.

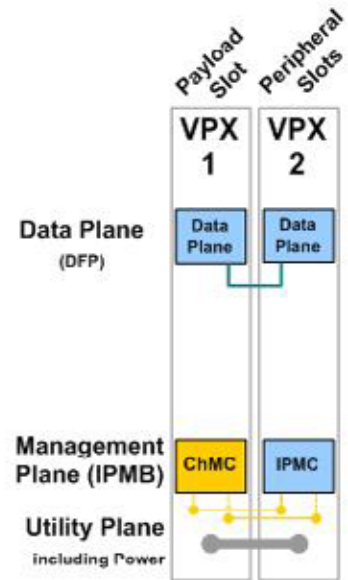
This desktop enclosure could be adapted for different applications, with VPX, OpenVPX, VME, CompactPCI, or hybrid type backplanes. Different types of power input can also be accommodated, as well as different levels of payload power dissipation.

# CHASSIS SOLUTION 849-S145

3U 2-SLOT OPENVPX  
CUSTOM ENCLOSURE

**TABLE 1: SPECIFICATIONS**

PHYSICAL	
Width	11.8"
Height	3.26"
Depth	6.6"
Weight	9.2 lbs.
ENVIRONMENTAL	
Operating Temperature	0° C to 40° C
Storage Temperature	-40° C to 70° C
Altitude	10,000 feet above MSL
Temperature Cycling	
Humidity	5 to 95% non-condensing
Cooling	Side-to-side using (2) 40mm fans
POWER/ELECTRICAL	
AC input	110V AC (input to separate ATX power supply)
DC Input	ATX power connector for DC power input to chassis
Backplane Connectors	2 slot, 3U OpenVPX compliant with front and RTM connectors
Connector Pitch	1.0" Per ANSI/VITA 48.1
Transmission Rate	5.0 Gbaud
CONSTRUCTION	
Extrusions	6063-T6 Aluminum
Top & Bottom	Hinged top cover: 0.22 nominal thickness clear Lexan Base Plate: Aluminum plate 2024-T351 or 6061-T651 Top Plate: 0.125 thick Aluminum 5052-H32
Card Cage	Sidepanels 0.050" thick Aluminum 5052-H32
Power Supply	Separate power supply: 1U high, 200 watts, 3.3@14, 5@20, +12@6, -12@.8
Card Guides	Molded plastic, Noryl N190X black , UL94-V0
Tapped Strips	Carbon steel bar stock with zinc plating and supplementary chromate treatment
ESD Ground Clips	Beryllium copper, alloy C17400, 1/2 height, with bright tin plating MIL-T-10727
Fan Tray	Qty. 2 fans, each 40 x 40 x 10 mm 5V



## WARRANTY

This product has a one year warranty.

## CONTACT INFORMATION

www.atrenne.com  
sales@atrenne.com  
508.588.6110 or 800.926.8722

The information in this document is subject to change without notice and should not be construed as a commitment by Atrenne, a Celestica company. While reasonable precautions have been taken, Atrenne assumes no responsibility for any errors that may appear in this document. All products shown or mentioned are trademarks or registered trademarks of their respective owners.

